

**Jefferson County Land & Water Conservation Committee Agenda**  
**"Working Together to Protect & Enhance the Environment"**

**Jefferson County Highway Committee Room ~ 1425 Wisconsin Dr, Jefferson, WI 53549-1701**

**Wednesday, September 20, 2023 @ 8:30 am**

Join Zoom Meeting ~ <https://us06web.zoom.us/j/81594414745>  
Meeting ID: 815 9441 4745# ~ Dial by your location: +1 312 626 6799

**Committee Members: Matt Foelker (Chair) (UW), Walt Christensen (Vice-Chair), Dan Herbst (UW), Cassie Richardson, Meg Turville-Heitz, Kirsten Jurcek (FSA), and Margaret Burlingham (PACE)**

1. Call to Order
2. Roll Call (Establish a Quorum)
3. Certification of Compliance with the Open Meetings Law
4. Review of the September Agenda
5. Approval of the August 16, 2023 Meeting Minutes
6. Public Comment (members of the public who wish to address the Committee on specific agenda items must register their request at this time)
7. Communications
  - Department of Agriculture, Trade & Consumer Protection (DATCP) September 2023 Report
8. Discussion on 2023 Wisconsin Act 32 on Land and Water Conservation Committee Appointments
9. Discussion on Natural Resources Conservation Service (NRCS) Report
10. Discussion on Departmental Updates
11. Discussion and Possible Action on Authorizing the Application and Implementation of a Wisconsin Department of Natural Resources Clean Boats, Clean Waters Grant
12. Discussion and Possible Action on Authorizing the Application and Implementation of a Wisconsin Department of Natural Resources Healthy Lakes and Rivers Grant
13. Discussion and Possible Action on Authorizing the Application and Implementation of a Wisconsin Department of Natural Resources Lake Monitoring and Protection Network Grant
14. Discussion and Possible Action on Spray Irrigation of Manure and Industrial Waste
15. Discussion on Producer-Led Groups: Jefferson County Soil Builders & Rock River Regenerative Graziers
16. Discussion and Possible Action on Notices of Noncompliance - Farmland Preservation Program (FPP)
17. Discussion and Possible Action on Cancellation of Notices of Noncompliance - FPP
18. Discussion and Possible Action on Purchase of Agriculture Conservation Easement (PACE) Applications & Baseline Documentation
19. Discussion and Possible Action on PACE Funding
20. Review of the Monthly Financial Report (July)
21. Discussion on Items for the Next Agenda
  - Next Scheduled Meeting October 18, 2023 @ 8:30 am Location To Be Determined
22. Adjournment

A quorum of any Jefferson County Committee, Board, Commission, or other body, including the Jefferson County Board of Supervisors, may be present at this meeting.

Individuals requiring special accommodations for attendance at this meeting should contact the County Administrator 24 hours prior to the meeting at (920) 674-7101 so appropriate arrangements can be made.

# Land & Water Conservation Committee Minutes

## August 16, 2023

### 1. Call to Order:

The monthly meeting was called to order by Matt Foelker at 8:30 am. Committee Members Matt Foelker (Chair) (UW), Walt Christensen (Vice-Chair) (via Zoom), Dan Herbst (UW) (via Zoom), Cassie Richardson (via Zoom), Meg Turville-Heitz, Kirsten Jurcek (FSA), and Margaret Burlingham (PACE) (8:30 - 10:35), were present. Also in attendance were Patricia Cicero, Director, Land & Water Conservation Department (LWCD); Kim Liakopoulos, LWCD; Dave Hoffman, LWCD (8:30 - 10:45); Sam Peterson, LWCD (8:30 - 10:45); Joe Strupp, LWCD (8:30 - 10:45); Michael Luckey, Assistant County Administrator; and Merica Xiong, Natural Resource Conservation Service (NRCS).

- Others in Attendance: Elizabeth Chilsen, Jefferson County Health Department (8:30 - 9:50), Ken Genskow, University of Wisconsin-Madison (8:30 - 9:50), Matt Zangl, Jefferson County Planning & Zoning Department (8:30 - 9:50), Anita Martin, Dean Weichmann, Frankie Fuller (via Zoom), and Joan Callan (via Zoom).

### 2. Roll Call (Establish a Quorum):

A quorum was established.

### 3. Certification of Compliance with the Open Meetings Law:

It was determined that the committee was in compliance with the Open Meetings Law.

### 4. Review of the August Agenda:

The August agenda was reviewed by the committee members. No changes were proposed.

### 5. Approval of the July 19, 2023 Meeting Minutes:

Burlingham made a motion to approve the July 19, 2023 meeting minutes as written, Herbst seconded. Motion passed 7/0.

### 6. Public Comment:

There were no comments.

### 7. Communications:

- Department of Agriculture, Trade & Consumer Protection August 2023 Report.

### 8. Discussion and Possible Action on Spray Irrigation of Manure and Industrial Waste - Elizabeth Chilsen, Jefferson County Health Department, and Ken Genskow, University of Wisconsin-Madison:

<https://fyi.extension.wisc.edu/manureirrigation/files/2017/04/Manure-Irrigation-Workgroup-Report-2016.pdf>

Chilsen and Genskow each gave a presentation on spray irrigation of manure. A question-and-answer period followed each presentation.

### 9. Natural Resources Conservation Service (NRCS) Report:

Merica Xiong is the new District Conservationist. Xiong introduced herself to the committee and gave an overview of her education and experience.

### 10. Discussion on Departmental Updates:

Cicero is working on the Strategic Plan. Cicero and Zach Nagel are attending Rock Lake water level meetings to provide information on resources. Cicero, Hoffman, and Nagel are working on the Healthy Lakes Program. Cicero met with the cities of Watertown and Whitewater, and a consultant for the city of Fort Atkinson, regarding a water quality trading program. Hoffman, Peterson, and Strupp are working on cover crop cost sharing.

**11. Discussion on Watertown Waterways Improvement Program:**

Cicero, Hoffman, the City of Watertown, and Rock River Coalition created a meeting invitation and brochure for the Watertown Waterways Improvement Program (WWIP). The invitation was mailed to over 400 landowners within the watershed. The WWIP meeting will be held August 30, 2023.

**12. Discussion on Producer-Led Groups: Jefferson County Soil Builders (JCSB) & Rock River Regenerative Graziers (R3G):**

JCSB and R3G are staging a field day hosted by Practical Farmers of Iowa 09/21/2023. JCSB will host a post-harvest field day in November, and a winter workshop in December. R3G has finished up their pasture walks for the season.

**13. Discussion and Possible Action on County Farm Lease Process:**

Cicero discussed extending the lease for a year due to a potential change in acreage.

**14. Discussion and Possible Action on Notices of Noncompliance - Farmland Preservation Program (FPP):**

There were no notices.

**15. Discussion and Possible Action on Cancellation of Notices of Noncompliance - FPP:**

There were no cancellations.

**16. Discussion on American Farmland Trust (AFT) Funding for the Purchase of Agriculture Conservation Easement (PACE) Program:**

Hoffman informed the committee that a \$10,000 grant from AFT was applied for and approved. This grant will be used to cover the costs of easement related items including a title search and appraisal. Cicero discussed the Memorandum of Understanding with AFT.

**17. Discussion and Possible Action on PACE Applications & Baseline Documentation:**

Hoffman is working on the Cummings easement to update the title insurance and set a closing date. The Rollefson title search is complete, the application will be submitted, an appraisal is next. PACE applications are being updated and a title search will now be required before an appraisal.

**18. Discussion and Possible Action on Policy Guidance Regarding Sale of County-Owned Property:**

Christensen provided an update on Finance Committee discussions regarding the sale of county-owned property and the PACE program.

**19. Discussion and Possible Action on Future PACE Funding:**

Cicero will ask AFT to attend an LWCC meeting to discuss funding possibilities. Christensen mentioned the strategic plan update and the opportunity to include PACE funding in the update.

**20. Discussion and Possible Action on Department 2024 Budget:**

Cicero summarized the 2024 budget and outlined the budget process.

**21. Review of the Monthly Financial Report (June):**

The most recent statement of revenues and expenditures was distributed.

**22. Discussion on Items for the Next Agenda:**

Possible agenda items include: Lake grant resolutions, PACE funding, Town of Ixonia ordinance.

- **Next Scheduled Meeting:** September 20, 2023 @ 8:30 in the Highway Committee Room

**23. Adjournment:**

Herbst made a motion to adjourn at 10:55 am, Turville-Heitz seconded. Motion passed 6/0.

Committee member Kirsten Jurcek has been appointed to serve on this committee due to her status as the designated Farm Service Agency committee member. All her opinions and votes are as a member of the public and as a producer/farmer, not as a representative of the Farm Service Agency, United States Department of Agriculture, or Federal Government.

*Kim Liakopoulos*  
*Administrative Specialist I ~ LWCD*



## DATCP REPORT

### Bureau of Land and Water Resources

### September 2023

---

#### **Soil and Water Resources Management Grants**

- The 2024 Preliminary Joint Allocation Plan was presented at the August Land and Water board meeting. Submit comments until September 5, 2023 at [datcpswrn@wisconsin.gov](mailto:datcpswrn@wisconsin.gov).
- DROUGHT MONITORING. You can be a part of the National Drought Mitigation Center's Drought Monitoring Network. [This link](#) will take you to the Drought Impacts Toolkit. Choose *Submit A Report* and complete the survey to include local information in the survey.

#### **ATCP 50 Rule Revision Update**

- The final rule draft will be presented to the ATCP Board at their September 21<sup>st</sup> meeting.

#### **Nutrient Management News**

- Previous SnapPlus Trainings can be found here: [DATCP Home Nutrient Management Trainings \(wi.gov\)](#)
- If you were unable to attend the Nutrient Management Regional Meetings, you can find the recordings of the presentations as well as the slides on the DATCP Nutrient Management Training Webpage: [DATCP Home Nutrient Management Regional Trainings \(wi.gov\)](#)
- Please reach out to Andrea Topper, [andrea.topper@wisconsin.gov](mailto:andrea.topper@wisconsin.gov), if you are planning to have a Nutrient Management Farmer Education Training and would like assistance.
- Counties need to submit their annual Nutrient Management numbers to Cody Calkins via the NM Annual Survey by November 15<sup>th</sup>. Please reach out to Cody at [cody.calkins@wisconsin.gov](mailto:cody.calkins@wisconsin.gov) if you need the link or any help with the survey or accompanying survey assistant spreadsheet.

#### **Soil Health**

- The new Soil Health website has been launched and the landing page can be found [here](#). Content will be added as it is developed so check back often. Contact [randy.zogbaum@wi.gov](mailto:randy.zogbaum@wi.gov) with questions.

#### **Land and Water Conservation Board-LWRM Plans**

- The Advisory Committee on Research will next meet virtually on September 5 from 9-10 a.m. Parties that wish to address the Committee at future meetings should contact Katy Smith @ [Katy.Smith@wisconsin.gov](mailto:Katy.Smith@wisconsin.gov) in advance to schedule the appropriate agenda item.
- The Land and Water Conservation Board meeting on October 3, 2023, will be a hybrid meeting. Monroe and Oneida counties will present a five-year review of their LWRM Plan.

#### **Conservation Engineering**

- The WI Land+Water Technical Committee has recently posted two documents on their webpage that help streamline

and standardize work by county LCDs. Links and a brief description for each are below:

- [Companion Document: Determining Direct Runoff from Feedlots to Waters of the State](#)  
This is a companion document to supplement the DNR NR 151 guidance on this topic. It provides additional considerations, checklists and information on the use and limitations of models when determining whether a site has a direct runoff from feedlots to Waters of the State.
- [Floodplain Zone A Conservation Practice No-Rise Checklist](#)  
This document aims to streamline floodplain permits and exemptions by providing a checklist of items to document and provide to show that a conservation project located in a Zone A floodplain does not cause a rise in floodplain elevation.
- NRCS will now be providing variances to Conservation Practice Standard (CPS) 367 *Roof and Covers*, which requires the use of the current version of ASCE 7 (2022) when designing roofs over manure storages or feed lots. Wisconsin currently uses the 2015 version of the International Building Code (IBC), which requires using ASCE 7 (2010). This creates a conflict when consultants are designing these projects. If you have a project that utilizes CPS 367 for a roof, talk to your DATCP area engineering contact to get information on receiving the variance to allow the use of ASCE 7 (2010).

### **Farmland Preservation Program and Agricultural Enterprise Areas (AEA)**

- Applications for FP plans and zoning ordinance certification that are due before the end of this calendar year must be received by **October 1<sup>st</sup>** in order to guarantee staff can complete their review. Extensions may be available to eligible areas. Email [DATCPWorkingLands@wisconsin.gov](mailto:DATCPWorkingLands@wisconsin.gov) with applications or questions.
- We are prioritizing FP agreement applications that are submitted to the department by *Monday, November 6, 2023*. We will continue to accept and process agreement applications as they are received after that date however those submitted later than November 6 may not be processed before the end of the taxable year. Encourage landowners to apply early to ensure they can receive the 2023 tax credit. The FP agreement application can be found [here](#).

### **Conservation Reserve Enhancement Program (CREP)**

- **CREP Easement Emergency Haying Available:** Due to this years drought and subsequent hardships being felt by Wisconsin farmers statewide, an option to request emergency haying on eligible CREP easements has been made available. County staff are asked to spread the word by reaching out to landowners in your county with CREP easements who may benefit from this option. The DATCP CREP easement temporary emergency haying request form ([DARM-BLWR-015](#)) is on the DATCP “CREP For Counties” website under the “Forms” section as well as announced on the [DATCP “Drought Resources” website](#). Eligibility requirements and instructions are listed on page 2 of the request form. Below is a summary:
  - Emergency Declaration: Any part of county reaches  $\geq D3$  for at min. 7 days or  $D2 > 8$  weeks, within a calendar year, as indicated by the [US Drought Monitor](#).
  - Authorization must be obtained from DATCP and Land Conservation Committee prior to haying activity.
  - Applies to CREP easements with expired Federal CRP1's.
  - Eligible Practices include CP1, CP2, CP8a, CP10, CP21 and CP23/23A
  - Limited to one harvest the year of approval outside the primary nesting season and cut no lower than 6”.
  - Haying activity may occur up to 90 days from authorization date.
  - Easement monitoring performed within the past 5 years and be in compliance status.
  - County performs follow up site visit to ensure no damage to conservation cover and reports findings to DATCP.

### **Agricultural Impact Statement (AIS) Program**

- Curious about what the AIS program is and does? Check out the [Intro to the AIS program](#) video at [agimpact.wi.gov](http://agimpact.wi.gov).

Do you have questions about the AIS program? Check out our [Frequently Asked Questions](#) page that addresses many of your top AIS questions. You can also contact [DATCPaImpactStatements@wi.gov](mailto:DATCPaImpactStatements@wi.gov) with questions regarding any active AIS statement or the AIS program.

### **Producer-Led Watershed Protection Grant (PLWPG) Program**

- The 2024 application period for Producer-Led Grants is now open. Application materials can be found on the program webpage: [DATCP Home Producer-Led Watershed Protection Grants \(wi.gov\)](#). Applications will be due on September 15, 2023, by 11:59 p.m. Questions, contact [dana.christel@wi.gov](mailto:dana.christel@wi.gov).
- The Nature Conservancy in Wisconsin is partnering with the Producer-Led program to provide grants in the amount of \$5,000-\$10,000 for innovative conservation practice incentive programs that can supplement a DATCP Producer-Led grant request. If interested, contact [dana.christel@wi.gov](mailto:dana.christel@wi.gov) for an application and for TNC contact details.
- The 2024 Annual Workshop will be held on February 20<sup>th</sup>, 2024 in Wausau, WI. Exact location and agenda details are forthcoming.

### **Nitrogen Optimization Pilot Program**

- NOPP projects are underway. Check out [NOP.wi.gov](http://NOP.wi.gov) for project spotlights. Subscribe to program updates [here](#).
- To follow along with the NOPP recipients and learn about the work they are doing, you can request to join the Nitrogen Optimization Pilot Program Facebook group administered by UW-Extension.

### **Crop Insurance Rebates for Planting Cover Crops Program**

- Farms that applied for the crop insurance premium rebate for planting cover crops program for the 2022-2023 application period that (1) have an eligible and active crop insurance policy and (2) submitted correct field and acreage information should see a discount on their upcoming crop insurance bills. Visit [CoverCropRebate.wi.gov](http://CoverCropRebate.wi.gov) for more information. Subscribe to program updates [here](#).
- The application for the Crop Insurance Rebates for Planting Cover Crops Program will open in December 2023, pending approval of an emergency rule for the program. Frequently asked questions about the program can be found on the [Cover Crops webpage](#). Contact [datcpcc@wisconsin.gov](mailto:datcpcc@wisconsin.gov) with any additional questions.

### **Legislation Updates**

- [Senate Bill 59](#) and [Assembly Bill 65](#) - Relating to: eligibility for producer-led watershed, lake, and river protection grants – Enacted into law May 9, 2023
- [Senate Bill 134](#) and [Assembly Bill 133](#) - Relating to: farmland preservation agreements and tax credits.
- [Senate Bill 147](#) and [Assembly Bill 131](#) - Relating to: membership in county land conservation committees.
- [Senate Bill 220](#) and [Assembly Bill 220](#) - Relating to: funding for the Fenwood Creek watershed pilot project.

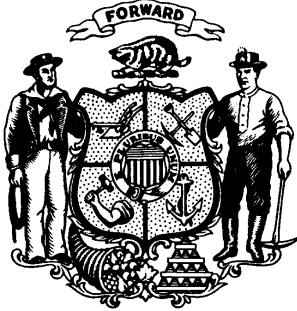
### **Tools and Resources – FYI**

- **NEW Bureau of Land and Water Training Request Form.** The DATCP Bureau of Land and Water has put together a new form for county staff and local governments to request training on programs and activities offered and supported by bureau staff. This form will allow you or your staff to request training in multiple areas at once

and will allow bureau staff to better coordinate our training efforts. Training request form: [Training Request for County Staff and Local Governments \(jotform.com\)](https://www.jotform.com)

- **Nutrient Pollution and Impacts Educational Module.** The [EPA Watershed Academy](https://www.epa.gov/watershedacademy) just released a new module that covers the basics of nutrient pollution and impacts this pollution has on water quality and human health. The module is designed as an educational tool to learn more about the basics of nutrient pollution and resulting water quality impacts. Nutrient Module: <https://www.epa.gov/watershedacademy/nutrient-pollution-module>.
- **Conservation Economics & Finance Resource Hub.** The [Conservation Economics & Finance Resource Hub](#) is a new resource for enhancing knowledge about the financial impacts of conservation agriculture practices. You can also read a blog post about it [here](#).
- **Funding Integration Tool for Source Water (FITS).** EPA updated the [Funding Integration Tool for Source Water \(FITS\)](#), a web-based, interactive one-stop-shop tool that explains how users can integrate various federal funding sources to support activities that protect sources of drinking water. The tool now provides relevant information on **fourteen** federal funding sources and outlines how these federal funding sources may be leveraged by states, tribes, and territories to implement different steps of source water protection planning (e.g., delineation of a source water protection area) and implementation (e.g., protective or restorative management activities on the ground). On EPA's [Source Water Protection webpage](#), you can find a 5-minute video tutorial and more information on the updated tool.

# State of Wisconsin



2023 Assembly Bill 131

Date of enactment: **August 4, 2023**  
Date of publication\*: **August 5, 2023**

## 2023 WISCONSIN ACT 32

AN ACT *to amend* 92.06 (1) (b) 2. of the statutes; **relating to:** membership in county land conservation committees.

*The people of the state of Wisconsin, represented in senate and assembly, do enact as follows:*

**SECTION 1.** 92.06 (1) (b) 2. of the statutes is amended to read:

92.06 (1) (b) 2. The county board shall appoint to the land conservation committee a person who is the chair-

person of the county farm service agency committee created under 16 USC 590h (b) or other county farm service agency committee member designated by the chairperson of the county farm service agency committee engaged in an agricultural use, as defined under s. 91.01 (2) (a) 1. to 7.

---

\* Section 991.11, WISCONSIN STATUTES: Effective date of acts. "Every act and every portion of an act enacted by the legislature over the governor's partial veto which does not expressly prescribe the time when it takes effect shall take effect on the day after its date of publication."



## RESOLUTION NO. 2023-

### **Authorizing the Application and Implementation of a Wisconsin Department of Natural Resources Clean Boats, Clean Waters Grant**

#### Executive Summary

The Wisconsin Department of Natural Resources has a grant program called Clean Boats, Clean Waters which funds staff to educate boaters on aquatic invasive species laws. In partnership with the Town and City of Lake Mills, the Jefferson County Land and Water Conservation Department will implement this grant program on Rock Lake in 2024. The Town and City of Lake Mills will provide matching funds for the program. The Land and Water Conservation Committee considered this resolution at its meeting on September 20, 2023 and recommended forwarding it to the County Board for approval.

WHEREAS, the Executive Summary is incorporated into this resolution, and

WHEREAS, the Land and Water Conservation Department is interested in obtaining a cost-share grant from the Wisconsin Department of Natural Resources to fund a Clean Boats, Clean Waters program on Rock Lake boat launches, and

WHEREAS, the Land and Water Conservation Department attests to the validity and veracity of the statements and representations contained in the grant application, and

WHEREAS, a grant agreement is requested by the Wisconsin Department of Natural Resources to carry out the project.

NOW, THEREFORE, BE IT RESOLVED, by the Jefferson County Board of Supervisors that the Land and Water Conservation Department will meet the financial obligations necessary to fully and satisfactorily complete the project and hereby authorizes and empowers the Land and Water Conservation Department Director to do the following:

1. Sign and submit a grant application and supporting documents to the Wisconsin Department of Natural Resources for financial assistance that may be available
2. Enter into a grant agreement with the Wisconsin Department of Natural Resources
3. Submit quarterly and/or final reports to the Wisconsin Department of Natural Resources to satisfy the grant agreement, as appropriate
4. Submit reimbursement request(s) to the Wisconsin Department of Natural Resources no later than the date specified in the grant agreement

BE IT FURTHER RESOLVED that the Land and Water Conservation Department will comply with all local, state and federal rules, regulations and ordinances relating to this project and the cost-share agreement.

*Fiscal Note: The total grant request is \$5,550 and the total Town and City of Lake Mills contribution is \$1,700 which will cover summer staff costs and supplies. The Land and Water Conservation Department budget will cover printing expenses. The grant amount, municipal amount, and corresponding expenses are included in the 2024 budget. No budget adjustment is necessary.*

Referred By:  
Land and Water Conservation Committee

10-xx-2023  
REVIEWED: Corporation Counsel: Finance Director:

## **RESOLUTION NO. 2023-**

### **Authorizing the Application and Implementation of a Wisconsin Department of Natural Resources Healthy Lakes and Rivers Grant**

#### Executive Summary

The Wisconsin Department of Natural Resources has a grant program called Healthy Lakes and Rivers which assists landowners with conservation practice implementation costs related to the installation of native plant shoreland gardens and rain gardens. These practices protect the quality of the lakes and rivers. The Jefferson County Land and Water Conservation Department applies for the Wisconsin Department of Natural Resources funds on behalf of property owners who want to implement these conservation practices. The Land and Water Conservation Committee considered this resolution at its September 20, 2023 meeting and recommended forwarding to the County Board to for approval.

---

WHEREAS, the Executive Summary is incorporated in this resolution, and

WHEREAS, the Jefferson County Land and Water Conservation Department is interested in obtaining a cost-share grant from the Wisconsin Department of Natural Resources for the purpose of implementing conservation practices within 1,000 feet of Jefferson County lakes and 300 feet of Jefferson County rivers, and

WHEREAS, the Jefferson County Land and Water Conservation Department attests to the validity and veracity of the statements and representations contained in the grant application, and

WHEREAS, a grant agreement is requested by the Wisconsin Department of Natural Resources to carry out the project.

NOW, THEREFORE, BE IT RESOLVED, by the Jefferson County Board of Supervisors that the Jefferson County Land and Water Conservation Department will meet the financial obligations necessary to fully and satisfactorily complete the project and hereby authorizes and empowers the Land and Water Conservation Department Director to do the following:

1. Sign and submit a grant application and supporting documents to the Wisconsin Department of Natural Resources for financial assistance that may be available
2. Enter into a grant agreement with the Wisconsin Department of Natural Resources
3. Submit quarterly and/or final reports to the Wisconsin Department of Natural Resources to satisfy the grant agreement as appropriate
4. Submit reimbursement requests to the Wisconsin Department of Natural Resources no later than the date specified in the grant agreement.

BE IT FURTHER RESOLVED that the Land and Water Conservation Department will comply with all local, state and federal rules, regulations and ordinances relating to this project and the cost-share agreement.

*Fiscal Note: The total grant request is \$6,600 of which \$6,000 will partially cover the costs of implementing the practices, with the landowners covering the remaining implementation costs. The remaining \$600 of the grant will offset the cost of existing Land and Water Conservation Department staff who will provide technical assistance for the projects. This grant amount and corresponding expenses are included in the 2024 budget. No budget adjustment is necessary.*

DRAFT

Referred By:  
Land and Water Conservation Committee

10-xx-2023

REVIEWED: Corporation Counsel: Finance Director:

## RESOLUTION NO. 2023-

### **Authorizing the Application and Implementation of a Wisconsin Department of Natural Resources Lake Monitoring and Protection Network Grant**

#### Executive Summary

The Wisconsin Department of Natural Resources provides annual support to counties for lake monitoring and aquatic invasive species prevention and management activities referenced as the Lake Monitoring and Protection Network grant. The amount allocated in 2024 for Jefferson County is \$13,003.36 and a grant application is required to be submitted to obtain the funds. The Land and Water Conservation Committee considered this resolution at its meeting on September 20, 2023 and recommended forwarding to the County Board for approval.

WHEREAS, the Executive Summary is incorporated into this resolution, and

WHEREAS, the Land and Water Conservation Department is interested in obtaining a cost-share grant from the Wisconsin Department of Natural Resources for the purpose of lake monitoring and aquatic invasive species prevention and management activities, and

WHEREAS, the Land and Water Conservation Department attests to the validity and veracity of the statements and representations contained in the grant application, and

WHEREAS, a grant agreement is requested by the Wisconsin Department of Natural Resources to carry out the project.

NOW, THEREFORE, BE IT RESOLVED, by the Jefferson County Board of Supervisors that the Land and Water Conservation Department will meet the financial obligations necessary to fully and satisfactorily complete the project and hereby authorizes and empowers the Land and Water Conservation Department Director to do the following:

1. Sign and submit a grant application and supporting documents to the Wisconsin Department of Natural Resources for financial assistance that may be available
2. Enter into a grant agreement with the Wisconsin Department of Natural Resources
3. Submit quarterly and/or final reports to the Wisconsin Department of Natural Resources to satisfy the grant agreement, as appropriate
4. Submit reimbursement request(s) to the Wisconsin Department of Natural Resources no later than the date specified in the grant agreement

BE IT FURTHER RESOLVED that the Land and Water Conservation Department will comply with all local, state and federal rules, regulations and ordinances relating to this project and the cost-share agreement.

*Fiscal Note: The total 2024 grant award will be \$13,003.36 which will cover the cost of staff time spent implementing the grant deliverables. This grant amount and corresponding expenses are included in the 2024 budget. No budget adjustment is necessary.*

Referred By:

Land and Water Conservation Committee

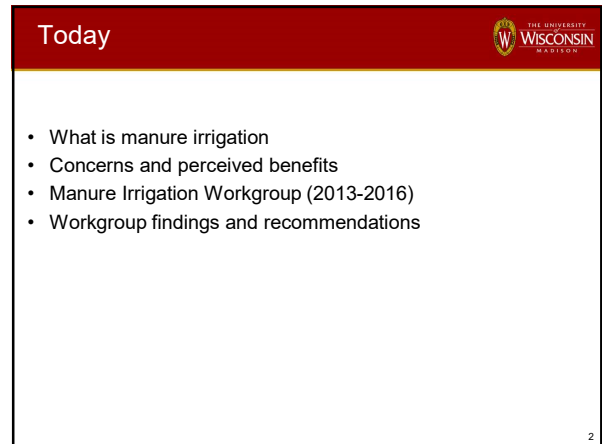
REVIEWED: Corporation Counsel:

10-xx-2023

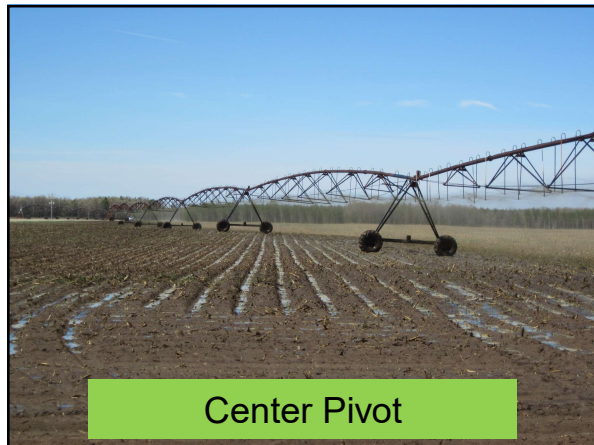
Finance Director:



1



2



3



4

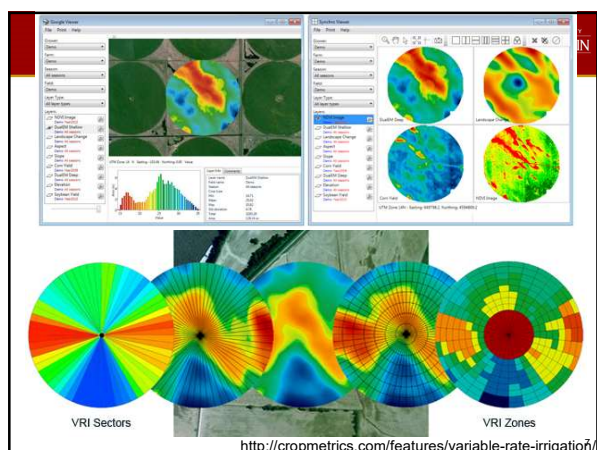


5



6





7



8



9



10

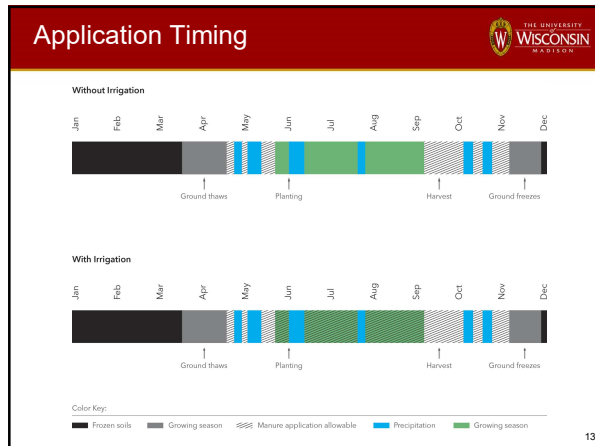


11

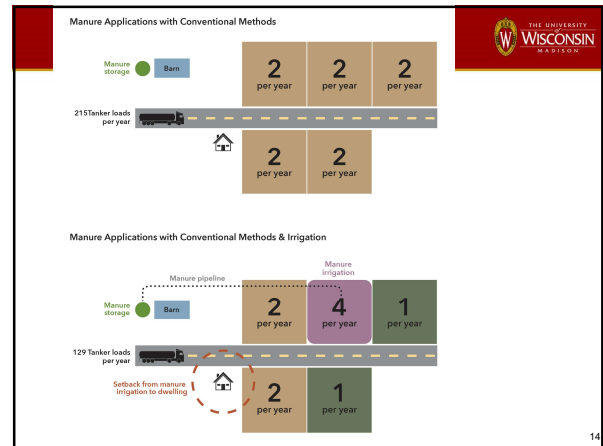
**Issues identified by public**

|   |   |
|---|---|
| <p><u>Concerns</u></p> <ul style="list-style-type: none"> <li>• Public health risk from airborne pathogens and other contaminants</li> <li>• Drift</li> <li>• Odor and other quality of life concerns</li> <li>• Surface water quality</li> <li>• Groundwater</li> <li>• Implementation and compliance</li> </ul> | <p><u>Benefits</u></p> <ul style="list-style-type: none"> <li>• Timing of manure application</li> <li>• Road safety and reduced road damage</li> <li>• Farm management and economic benefits</li> </ul> |
|---|---|

12



13



14

### Manure Irrigation Workgroup

Convened Spring 2013

Purpose:

Review issues and develop guidance on the practices of applying livestock manure or process wastewater through irrigation equipment

Audience:

- State and local agencies and officials
- Interested/concerned stakeholders
- Producers interested in the practices

<http://fyi.uwex.edu/manureirrigation/>

15

### Manure Irrigation Workgroup

**Composition:**

|                          |                                      |
|--------------------------|--------------------------------------|
| UW-Madison/Extension (3) | County Health Departments (2)        |
| USDA-ARS (1)             | Dairy Farmers (3)                    |
| USDA-NRCS (1)            | Professional agronomist (1)          |
| WDNR (2)                 | Nutrient applicator (1)              |
| WDATCP (1)               | Organic Farmer/concerned citizen (1) |
| WDHS (2)                 | Wisconsin Land+Water Assoc (1)       |

Public Forums May 2013

Workgroup meetings: July 2013 – September 2015 (16 meetings)

Concurrent pathogen drift study by USDA-ARS & UW-Madison: 2013-2015

16

### Workgroup Report

- Introduction
- Manure content, management, and current regulations
- Considerations for manure irrigation practice
  - Droplet drift
  - Odor
  - Water quality
  - Air quality
  - Airborne pathogens
  - Timing
  - Other management issues
- Scenarios
- Response & recommendations

Appendices – including pathogen drift study expanded summary

<http://fyi.uwex.edu/manureirrigation/>

17

### Section 3: For each sub-section

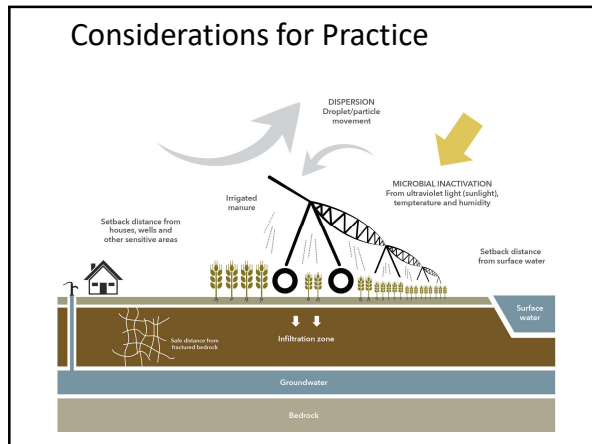
[drift, odor, water quality, air quality, airborne pathogens]

- Definitions, Issues, Concerns
- Current Practice & Regulations
- Unknowns/uncertainties
- Summary table

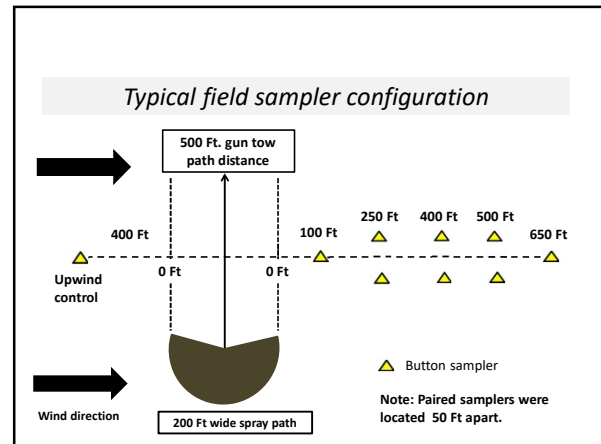
Practices expected to limit or exacerbate related to:

- Siting
- Weather
- Waste characteristics
- Equipment

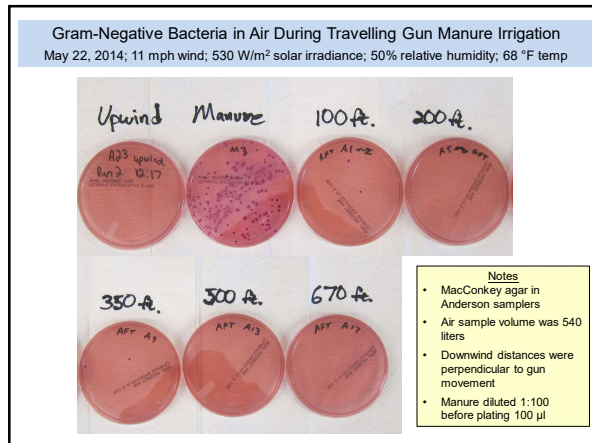
18



19



20



21

### Workgroup Recommendations

- Multiple meetings
- Consensus seeking
  - Consensus: unanimous agreement – could “live with”
  - Near consensus: high level of agreement (all but 1 or 2)
  - Close to near consensus: a few not in agreement
  - No agreement: broader disagreement

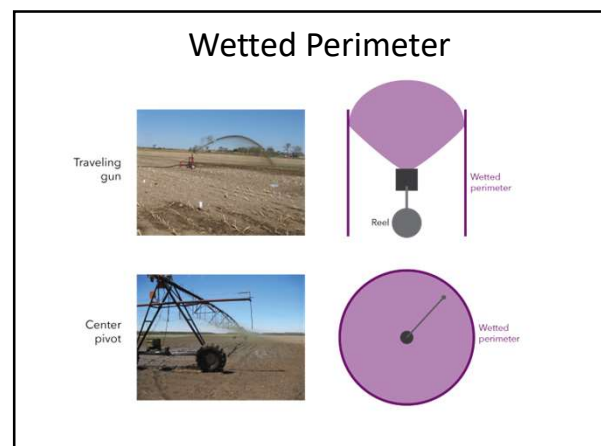
22

### Consensus Baseline Recommendations

In all cases must:

- Follow all existing laws for animal waste and nutrient management
- Have and follow 590-standard Nutrient Management Plan
- Take appropriate steps to minimize drift
- Ensure no overspray of irrigated manure
- Have suitable means of supervising/controlling equipment
- Have suitable means of determining relevant weather info
- Have means of preventing backflow if connected to water
- Ensure no human waste or septage is processed with manure
- Drop nozzles if center pivot
- Nozzles and pressures for “coarse” or larger droplet size

23



24



### Setback Distance



25

### Setback - Dwelling



500 – 750 feet: Near consensus, under various conditions for  
wind speed and direction  
250 feet: Close to near consensus, for some situations;  
no agreement for others

26

### Setback – Road Right-of-Way



0 feet: Near consensus, all types of roads and highways

27

### Setback – Adjacent Ag Properties



0 feet: Near consensus – pasture and crops that are not  
organic or raw consumed  
0 – 50 feet: Close to near consensus – regardless of crop

28

### Setback– Property Line for Public Recreation Area, School, Playground



100 feet: Near consensus, IF wind-speed  $\leq 10$  mph AND  
parallel or away from property line  
Other distances: No agreement

29

### Night-time Application

Consensus: NOT for raw/untreated  
Near consensus: same as daylight IF manure treated AND wind-  
speed  $\geq 2$  mph but  $\leq 10$  mph AND wind is parallel  
or away from building or property line  
Close to near consensus: same as daylight IF manure treated and  
wind-speed  $\geq 2$  mph but  $\leq 10$  mph  
Close to near consensus: same as daylight IF manure treated and  
wind-speed  $\geq 4$  mph but  $\leq 10$  mph AND wind is  
parallel or away from building or property line

30



## Thank You



**CONSIDERATIONS  
FOR THE USE OF  
MANURE IRRIGATION  
PRACTICES**

Report from the Wisconsin Manure Irrigation Workgroup

Report (2016) and additional resources  
available at:

<http://fyi.uwex.edu/manureirrigation/>

08/22/2023  
11:31:06

Jefferson County  
FLEXIBLE PERIOD REPORT

PAGE 1  
glflxrpt

FROM 2023 01 TO 2023 07

| ACCOUNTS FOR:<br>100 General Fund          | ORIGINAL<br>APPROP | TRANFRS/<br>ADJSTMTS | REVISED<br>BUDGET | ACTUALS     | ENCUMBRANCES | AVAILABLE<br>BUDGET | PCT<br>USED |
|--|--------------------|----------------------|-------------------|-------------|--------------|---------------------|-------------|
| <b>12401 Land Conservation</b>             |                    |                      |                   |             |              |                     |             |
| 12401 411100 General Property Taxes        | -396,583           | 0                    | -396,583          | -231,339.99 | .00          | -165,242.88         | 58.3%       |
| 12401 421001 State Aid                     | -197,272           | 0                    | -197,272          | -11,703.02  | .00          | -185,568.98         | 5.9%        |
| 12401 432099 Other Permits                 | -150               | 0                    | -150              | .00         | .00          | -150.00             | .0%         |
| 12401 451020 Other Fees                    | -250               | 0                    | -250              | .00         | .00          | -250.00             | .0%         |
| 12401 451421 Crep Cancellation Fee         | -250               | 0                    | -250              | .00         | .00          | -250.00             | .0%         |
| 12401 458001 Tree Sales                    | -8,050             | 0                    | -8,050            | -8,100.00   | .00          | 50.00               | 100.6%      |
| 12401 458005 Ag & Hortic Supply Revenue    | -50                | 0                    | -50               | -50.00      | .00          | .00                 | 100.0%      |
| 12401 458009 Livestock Siting App Review F | -1,500             | 0                    | -1,500            | -500.00     | .00          | -1,000.00           | 33.3%       |
| 12401 458013 Farmland Cert Fee             | -16,100            | 0                    | -16,100           | -14,560.00  | .00          | -1,540.00           | 90.4%       |
| 12401 511110 Salary-Permanent Regular      | 96,281             | 0                    | 96,281            | 55,311.96   | .00          | 40,968.80           | 57.4%       |
| 12401 511210 Wages-Regular                 | 316,691            | 0                    | 316,691           | 167,408.62  | .00          | 149,282.76          | 52.9%       |
| 12401 511220 Wages-Overtime                | 5                  | 0                    | 5                 | 30.27       | .00          | -24.93              | 566.9%      |
| 12401 511330 Wages-Longevity Pay           | 354                | 0                    | 354               | .00         | .00          | 353.75              | .0%         |
| 12401 512141 Social Security               | 29,301             | 0                    | 29,301            | 16,003.58   | .00          | 13,297.66           | 54.6%       |
| 12401 512142 Retirement (Employer)         | 28,107             | 0                    | 28,107            | 14,741.41   | .00          | 13,365.12           | 52.4%       |
| 12401 512144 Health Insurance              | 99,363             | 0                    | 99,363            | 43,883.26   | .00          | 55,479.77           | 44.2%       |
| 12401 512145 Life Insurance                | 52                 | 0                    | 52                | 28.14       | .00          | 23.70               | 54.3%       |
| 12401 512173 Dental Insurance              | 5,448              | 0                    | 5,448             | 2,984.89    | .00          | 2,463.11            | 54.8%       |
| 12401 531100 Permits Purchased             | 31                 | 0                    | 31                | 51.25       | .00          | -20.25              | 165.3%      |
| 12401 531301 Office Equipment              | 100                | 0                    | 100               | .00         | .00          | 100.00              | .0%         |
| 12401 531303 Computer Equipmt & Software   | 100                | 0                    | 100               | .00         | .00          | 100.00              | .0%         |
| 12401 531311 Postage & Box Rent            | 1,200              | 0                    | 1,200             | 355.94      | .00          | 844.06              | 29.7%       |
| 12401 531312 Office Supplies               | 350                | 0                    | 350               | 327.00      | .00          | 23.00               | 93.4%       |
| 12401 531313 Printing & Duplicating        | 400                | 0                    | 400               | 1.44        | .00          | 398.56              | .4%         |
| 12401 531314 Small Items Of Equipment      | 250                | 0                    | 250               | .00         | .00          | 250.00              | .0%         |
| 12401 531324 Membership Dues               | 1,995              | 0                    | 1,995             | 1,976.19    | .00          | 18.81               | 99.1%       |
| 12401 531326 Advertising                   | 0                  | 0                    | 0                 | 207.51      | .00          | -207.51             | .0%         |
| 12401 531341 Agricultural & Hortic Suppli  | 5,800              | 0                    | 5,800             | 184.68      | .00          | 5,615.32            | 3.2%        |
| 12401 531348 Educational Supplies          | 50                 | 0                    | 50                | .00         | .00          | 50.00               | .0%         |
| 12401 531351 Gas/Diesel                    | 1,450              | 0                    | 1,450             | 634.47      | .00          | 815.53              | 43.8%       |
| 12401 532325 Registration                  | 1,600              | 0                    | 1,600             | 485.00      | .00          | 1,115.00            | 30.3%       |
| 12401 532332 Mileage                       | 20                 | 0                    | 20                | .00         | .00          | 20.00               | .0%         |
| 12401 532335 Meals                         | 130                | 0                    | 130               | 10.00       | .00          | 120.00              | 7.7%        |
| 12401 532336 Lodging                       | 750                | 0                    | 750               | .00         | .00          | 750.00              | .0%         |
| 12401 533225 Telephone & Fax               | 325                | 0                    | 325               | 76.64       | .00          | 248.36              | 23.6%       |
| 12401 533236 Wireless Internet             | 1,050              | 0                    | 1,050             | 588.74      | .00          | 461.26              | 56.1%       |
| 12401 535242 Maintain Machinery & Equip    | 450                | 0                    | 450               | 306.21      | .00          | 143.79              | 68.0%       |
| 12401 535259 Tree Planter Service          | 50                 | 0                    | 50                | .00         | .00          | 50.00               | .0%         |

08/22/2023  
11:31:07

Jefferson County  
FLEXIBLE PERIOD REPORT

PAGE 2  
glflxrpt

FROM 2023 01 TO 2023 07

| ACCOUNTS FOR:                  |                                      | ORIGINAL | TRANFRS/ | REVISED |            |              | AVAILABLE  | PCT    |
|--------------------------------|--------------------------------------|----------|----------|---------|------------|--------------|------------|--------|
| 100 General Fund               |                                      | APPROP   | ADJSTMTS | BUDGET  | ACTUALS    | ENCUMBRANCES | BUDGET     | USED   |
|                                |                                      |          |          |         |            |              |            |        |
| 12401                          | 535349 Other Supplies                | 80       | 0        | 80      | 28.62      | .00          | 51.38      | 35.8%  |
| 12401                          | 571004 IP Telephony Allocation       | 637      | 0        | 637     | 371.56     | .00          | 265.44     | 58.3%  |
| 12401                          | 571005 Duplicating Allocation        | 515      | 0        | 515     | 300.44     | .00          | 214.56     | 58.3%  |
| 12401                          | 571009 MIS PC Group Allocation       | 14,417   | 0        | 14,417  | 8,409.94   | .00          | 6,007.06   | 58.3%  |
| 12401                          | 571010 MIS Systems Grp Alloc(ISIS)   | 4,525    | 0        | 4,525   | 2,639.56   | .00          | 1,885.44   | 58.3%  |
| 12401                          | 571020 Fleet Allocation              | 2,600    | 0        | 2,600   | .00        | .00          | 2,600.00   | .0%    |
| 12401                          | 591519 Other Insurance               | 5,728    | 0        | 5,728   | 2,809.87   | .00          | 2,918.13   | 49.1%  |
| 12402 wildlife Crop Damage     |                                      |          |          |         |            |              |            |        |
| 12402                          | 421001 State Aid                     | -20,000  | 0        | -20,000 | -9,450.35  | .00          | -10,549.65 | 47.3%  |
| 12402                          | 529299 Purchase Care & Services      | 20,000   | 0        | 20,000  | 13,627.27  | .00          | 6,372.73   | 68.1%  |
| 12404 Local Cost Share Program |                                      |          |          |         |            |              |            |        |
| 12404                          | 421001 24403 State Aid               | -3,300   | -8,000   | -11,300 | -1,925.00  | .00          | -9,375.00  | 17.0%  |
| 12404                          | 421001 24406 State Aid               | -1,303   | 0        | -1,303  | .00        | .00          | -1,303.00  | .0%    |
| 12404                          | 472337 24404 Municipal Grant Revenue | -40,000  | 0        | -40,000 | -67,726.41 | .00          | 27,726.41  | 169.3% |
| 12404                          | 529299 24403 Purchase Care & Service | 3,300    | 8,000    | 11,300  | .00        | .00          | 11,300.00  | .0%    |
| 12404                          | 529299 24404 Purchase Care & Service | 55,000   | 0        | 55,000  | 24,566.00  | .00          | 30,434.00  | 44.7%  |
| 12404                          | 529299 24406 Purchase Care & Service | 1,303    | 0        | 1,303   | .00        | .00          | 1,303.00   | .0%    |
| 12404                          | 594950 24404 Operating Reserve       | 21,514   | 30,553   | 52,066  | .00        | .00          | 52,066.01  | .0%    |
| 12404                          | 594950 24406 Operating Reserve       | 122      | 603      | 725     | .00        | .00          | 725.00     | .0%    |
| 12404                          | 699700 24404 Resv Applied Operating  | -36,514  | -30,553  | -67,066 | .00        | .00          | -67,066.01 | .0%    |
| 12404                          | 699700 24406 Resv Applied Operating  | -122     | -603     | -725    | .00        | .00          | -725.00    | .0%    |
| 12405 DATCP Cost Share         |                                      |          |          |         |            |              |            |        |
| 12405                          | 421001 24405 State Aid               | 0        | -40,356  | -40,356 | -20.00     | .00          | -40,336.00 | .0%    |
| 12405                          | 421003 State Aid GPR                 | -12,000  | 0        | -12,000 | .00        | .00          | -12,000.00 | .0%    |
| 12405                          | 421004 State Aid Bonded              | -35,000  | 0        | -35,000 | .00        | .00          | -35,000.00 | .0%    |
| 12405                          | 485200 24405 Donations Restricted    | 0        | -10,000  | -10,000 | -10,000.00 | .00          | .00        | 100.0% |
| 12405                          | 511210 24405 Wages-Regular           | 0        | 875      | 875     | .00        | .00          | 875.00     | .0%    |
| 12405                          | 521219 24405 Other Professional Serv | 0        | 13,925   | 13,925  | .00        | .00          | 13,925.00  | .0%    |
| 12405                          | 529299 24405 Purchase Care & Service | 0        | 35,456   | 35,456  | 4,165.50   | .00          | 31,290.50  | 11.7%  |
| 12405                          | 531312 24405 Office Supplies         | 0        | 50       | 50      | .00        | .00          | 50.00      | .0%    |
| 12405                          | 531319 24405 Other Operating Supplie | 0        | 1,500    | 1,500   | 98.00      | .00          | 1,402.00   | 6.5%   |
| 12405                          | 531343 24405 Food                    | 0        | 0        | 0       | 270.91     | .00          | -270.91    | .0%    |
| 12405                          | 531348 24405 Educational Supplies    | 0        | 100      | 100     | .00        | .00          | 100.00     | .0%    |

08/22/2023  
11:31:08

Jefferson County  
FLEXIBLE PERIOD REPORT

PAGE 3  
glflxrpt

FROM 2023 01 TO 2023 07

| ACCOUNTS FOR:                    |        |       |                           | ORIGINAL | TRANFRS/ | REVISED  |            |              | AVAILABLE   | PCT    |
|----------------------------------|--------|-------|---------------------------|----------|----------|----------|------------|--------------|-------------|--------|
| 100 General Fund                 |        |       |                           | APPROP   | ADJSTMTS | BUDGET   | ACTUALS    | ENCUMBRANCES | BUDGET      | USED   |
| 12405                            | 536539 | 24405 | Other Rents & Leases      | 0        | 1,450    | 1,450    | 400.00     | .00          | 1,050.00    | 27.6%  |
| 12405                            | 591519 |       | Other Insurance           | 0        | 0        | 0        | 5.25       | .00          | -5.25       | .0%    |
| 12405                            | 593701 |       | Cost Share Payment        | 47,000   | 0        | 47,000   | .00        | .00          | 47,000.00   | .0%    |
| 12405                            | 699700 | 24405 | Resv Applied Operating    | 0        | -3,000   | -3,000   | .00        | .00          | -3,000.00   | .0%    |
| <b>12406 Non-Metallic Mining</b> |        |       |                           |          |          |          |            |              |             |        |
| 12406                            | 411100 |       | General Property Taxes    | 13,475   | 0        | 13,475   | 7,860.44   | .00          | 5,614.56    | 58.3%  |
| 12406                            | 432004 |       | Non-Metallic Permit Fee   | -900     | 0        | -900     | .00        | .00          | -900.00     | .0%    |
| 12406                            | 432005 |       | Non-Metallic Annual Fee   | -11,390  | 0        | -11,390  | .00        | .00          | -11,390.00  | .0%    |
| 12406                            | 474175 |       | Highway Billed            | -1,925   | 0        | -1,925   | .00        | .00          | -1,925.00   | .0%    |
| 12406                            | 531311 |       | Postage & Box Rent        | 50       | 0        | 50       | 30.09      | .00          | 19.91       | 60.2%  |
| 12406                            | 531312 |       | Office Supplies           | 50       | 0        | 50       | .00        | .00          | 50.00       | .0%    |
| 12406                            | 531351 |       | Gas/Diesel                | 60       | 0        | 60       | .00        | .00          | 60.00       | .0%    |
| 12406                            | 532325 |       | Registration              | 260      | 0        | 260      | .00        | .00          | 260.00      | .0%    |
| 12406                            | 532335 |       | Meals                     | 40       | 0        | 40       | .00        | .00          | 40.00       | .0%    |
| 12406                            | 532336 |       | Lodging                   | 280      | 0        | 280      | .00        | .00          | 280.00      | .0%    |
| <b>12407 Farmland Easement</b>   |        |       |                           |          |          |          |            |              |             |        |
| 12407                            | 424001 |       | Federal Grants            | -80,000  | 0        | -80,000  | .00        | .00          | -80,000.00  | .0%    |
| 12407                            | 458003 |       | Farmland Easement Fee     | -750     | 0        | -750     | .00        | .00          | -750.00     | .0%    |
| 12407                            | 481001 |       | Interest & Dividends      | -3,000   | 0        | -3,000   | -5,146.71  | .00          | 2,146.71    | 171.6% |
| 12407                            | 521219 |       | Other Professional Serv   | 3,000    | 0        | 3,000    | .00        | .00          | 3,000.00    | .0%    |
| 12407                            | 531311 |       | Postage & Box Rent        | 20       | 0        | 20       | 6.89       | .00          | 13.11       | 34.5%  |
| 12407                            | 531312 |       | Office Supplies           | 25       | 0        | 25       | 17.04      | .00          | 7.96        | 68.2%  |
| 12407                            | 531313 |       | Printing & Duplicating    | 30       | 0        | 30       | .00        | .00          | 30.00       | .0%    |
| 12407                            | 594816 |       | Capital Conserve Easement | 120,000  | 0        | 120,000  | .00        | .00          | 120,000.00  | .0%    |
| 12407                            | 594950 |       | Operating Reserve         | 0        | -2,344   | -2,344   | .00        | .00          | -2,344.30   | .0%    |
| 12407                            | 594960 |       | Capital Reserve           | 94,372   | 0        | 94,372   | .00        | .00          | 94,372.49   | .0%    |
| 12407                            | 699800 |       | Resv Applied Capital      | -133,697 | 2,344    | -131,353 | .00        | .00          | -131,353.19 | .0%    |
| <b>12408 County Farm</b>         |        |       |                           |          |          |          |            |              |             |        |
| 12408                            | 411100 |       | General Property Taxes    | 96,455   | 0        | 96,455   | 56,265.51  | .00          | 40,189.65   | 58.3%  |
| 12408                            | 482003 |       | County Farm Land Rent     | -100,427 | 0        | -100,427 | -50,213.25 | .00          | -50,213.75  | 50.0%  |
| 12408                            | 529170 |       | Grounds Keeping Charges   | 1,972    | 0        | 1,972    | 18.52      | .00          | 1,953.32    | .9%    |
| 12408                            | 535249 |       | Sundry Repair             | 2,000    | 0        | 2,000    | .00        | .00          | 2,000.00    | .0%    |
| <b>12409 Farm Drainage Board</b> |        |       |                           |          |          |          |            |              |             |        |
| 12409                            | 411100 |       | General Property Taxes    | -10,000  | 0        | -10,000  | -5,833.31  | .00          | -4,166.69   | 58.3%  |

08/22/2023  
 11:31:09

 Jefferson County  
 FLEXIBLE PERIOD REPORT

 PAGE 4  
 glflxrpt

FROM 2023 01 TO 2023 07

 ACCOUNTS FOR:  
 100 General Fund

|                                       | ORIGINAL<br>APPROP | TRANFRS/<br>ADJSTMTS | REVISED<br>BUDGET | ACTUALS  | ENCUMBRANCES | AVAILABLE<br>BUDGET | PCT<br>USED |
|---------------------------------------|--------------------|----------------------|-------------------|----------|--------------|---------------------|-------------|
| 12409 514151 Per Diem                 | 4,000              | 0                    | 4,000             | 1,690.00 | .00          | 2,310.00            | 42.3%       |
| 12409 521212 Legal                    | 1,650              | 0                    | 1,650             | .00      | .00          | 1,650.00            | .0%         |
| 12409 531312 Office Supplies          | 250                | 0                    | 250               | .00      | .00          | 250.00              | .0%         |
| 12409 531313 Printing & Duplicating   | 150                | 0                    | 150               | .00      | .00          | 150.00              | .0%         |
| 12409 531324 Membership Dues          | 100                | 0                    | 100               | 140.00   | .00          | -40.00              | 140.0%      |
| 12409 531349 Other Operating Expenses | 100                | 0                    | 100               | .00      | .00          | 100.00              | .0%         |
| 12409 532325 Registration             | 100                | 0                    | 100               | .00      | .00          | 100.00              | .0%         |
| 12409 532332 Mileage                  | 2,150              | 0                    | 2,150             | 612.35   | .00          | 1,537.65            | 28.5%       |
| 12409 591513 Drainage Board Insurance | 1,500              | 0                    | 1,500             | 1,385.00 | .00          | 115.00              | 92.3%       |

08/22/2023  
 11:31:09

Jefferson County  
 FLEXIBLE PERIOD REPORT

PAGE 5  
 glflxrpt

FROM 2023 01 TO 2023 07

|             | ORIGINAL<br>APPROP | TRANFRS/<br>ADJSTMTS | REVISED<br>BUDGET | ACTUALS   | ENCUMBRANCES | AVAILABLE<br>BUDGET | PCT<br>USED |
|-------------|--------------------|----------------------|-------------------|-----------|--------------|---------------------|-------------|
| GRAND TOTAL | 0                  | 0                    | 0                 | 14,747.92 | .00          | -14,747.92          | .0%         |